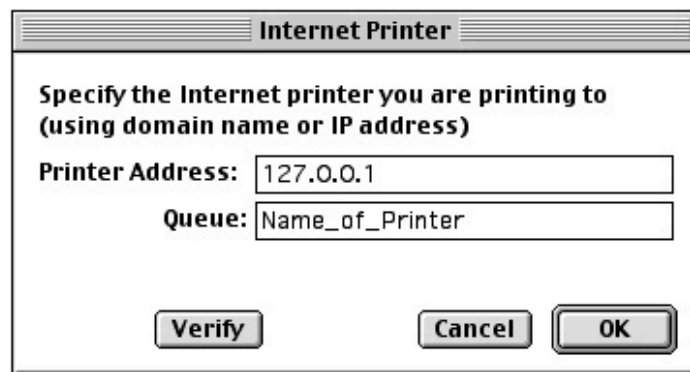


6. Enable Printer Sharing in Sharing preferences.

On the Mac OS 9 computer

1. Open Desktop Printer Utility (located in Applications (Mac OS 9)/Utilities).
2. In the New Desktop Printer window, select "Printer (LPR)," then click OK.
3. Leave the PPD File set to Generic--do not click the "Change..." button in the PostScript Printer Description (PPD) File box.
4. Click the "Change..." button in LPR Printer Selection section of the window.
5. In the Printer Address field, type the IP address of the Mac OS X computer that is sharing the printer (see above).
6. In the Queue field, type the Queue Name found on the computer sharing the printer (see above).
7. Click OK.



8. Click the "Create..." button and enter a desired name of the printer in the "Save desktop printer as" field.
9. Click Save.

The Mac OS 9 computer can now print to the shared printer [using LPR](#).

If you select a different printer in Chooser in the future, and want to go back to the shared printer, see [this article](#) for more information.